

27/11/2018

View Question Paper

Roll No: **ErForum**

Registered Photo

Registration No: **www.ErForum.Net**Name: **Engineers' Forum**Date: **25-Oct-2018**Examination: **JUNIOR TRAINEE - ELECTRICAL****Section 1 - GENERAL KNOWLEDGE****Question No.1**

1.00

Bookmark ☐

Expand the abbreviation: BHEL

- ☐ Bharat Heavy Electric Limited - (Alternative 2)
- ☐ Bombay Heavy Electrical Limited - (Alternative 3)
- ☐ Bharat High Engineering Limited - (Alternative 4)
- ☒ **Bharat Heavy Electricals Limited - (Alternative 1)**

Question No.2

1.00

Bookmark ☐

Which of the following countries returned the helicopter presented by India ?

- ☐ Sri Lanka - (Alternative 1)
- ☐ Bhutan - (Alternative 4)
- ☒ **Maldives - (Alternative 2)**
- ☐ Myanmar - (Alternative 3)

Question No.3

1.00

Bookmark ☐

Who inaugurated the 'first ever' India Tourism Mart (ITM 2018) in New Delhi on 17th September 2018?

- ☐ Sushma Swaraj - (Alternative 1)
- ☒ **Arjun Jaitley - (Alternative 4)**
- ☐ **Piyush Goyal - (Alternative 2)**
- ☐ Rajnath Singh - (Alternative 3)

Question No.4

1.00

Bookmark ☐

Who has been appointed as the Chairman of National Green Tribunal?

- ☐ Lokeshwar Panta - (Alternative 4)
- ☐ Jawed Rahim - (Alternative 3)
- ☐ Swatanter Kumar - (Alternative 1)
- ☒ **Adarsh Kumar Goel - (Alternative 2)**

Question No.5

1.00

Bookmark ☐

Which is the first State to implement the National Policy on Biofuels unveiled by the Centre in May 2018?

- ☐ Jharkand - (Alternative 4)
- ☒ **Rajasthan - (Alternative 1)**
- ☐ Bihar - (Alternative 2)
- ☒ **Maharashtra - (Alternative 3)**

Question No.6	1.00
Bookmark <input type="checkbox"/>	
Who is the first Indian gymnast to win gold at Gymnastics World cup ?	
<ul style="list-style-type: none"><input type="radio"/> Aruna Reddy - (Alternative 1)<input type="radio"/> Rakesh Patra - (Alternative 3)<input type="radio"/> Siddharth Nigam - (Alternative 4)<input checked="" type="radio"/> Dipa Karmakar - (Alternative 2)	
Question No.7	1.00
Bookmark <input type="checkbox"/>	
National Institute Of Technology, Surathkal is in which State?	
<ul style="list-style-type: none"><input checked="" type="radio"/> Karnataka - (Alternative 3)<input type="radio"/> Rajasthan - (Alternative 1)<input type="radio"/> Uttar Pradesh - (Alternative 2)<input type="radio"/> Bihar - (Alternative 4)	
Question No.8	1.00
Bookmark <input type="checkbox"/>	
At what 'centigrade temperature' is the density of water maximum?	
<ul style="list-style-type: none"><input type="radio"/> 10 deg C - (Alternative 1)<input type="radio"/> 0 deg C - (Alternative 3)<input type="radio"/> 12 deg C - (Alternative 4)<input checked="" type="radio"/> 4 deg C - (Alternative 2)	
Question No.9	1.00
Bookmark <input type="checkbox"/>	
On July 21, 2018, the Indian Prime Minister launched the Emergency Ambulance Service for which Country?	
<ul style="list-style-type: none"><input type="radio"/> Bangladesh - (Alternative 1)<input checked="" type="radio"/> Nepal - (Alternative 2)<input type="radio"/> Sri Lanka - (Alternative 3)<input type="radio"/> Afghanistan - (Alternative 4)	
Question No.10	1.00
Bookmark <input type="checkbox"/>	
In which State 'Moplah' peasant movement was held in 1921?	
<ul style="list-style-type: none"><input type="radio"/> Maharashtra - (Alternative 1)<input type="radio"/> Tamil Nadu - (Alternative 4)<input type="radio"/> Bengal - (Alternative 2)<input checked="" type="radio"/> Kerala - (Alternative 3)	
Question No.11	1.00
Bookmark <input type="checkbox"/>	
What is Jamshedpur famous for?	
<ul style="list-style-type: none"><input type="radio"/> Woollen sweaters manufacturing - (Alternative 1)<input type="radio"/> Ship Building - (Alternative 4)<input type="radio"/> Hosiery Industry - (Alternative 3)<input checked="" type="radio"/> Steel industry - (Alternative 2)	

<p>Question No.12 1.00</p> <p style="text-align: right;">Bookmark <input type="checkbox"/></p> <p>Which is the capital of Turkey?</p> <ul style="list-style-type: none"> <input checked="" type="radio"/> Ankara - (Alternative 1) <input type="radio"/> Bursa - (Alternative 2) <input type="radio"/> Konya - (Alternative 4) <input type="radio"/> Antalya - (Alternative 3)
<p>Question No.13 1.00</p> <p style="text-align: right;">Bookmark <input type="checkbox"/></p> <p>Expand the abbreviation : "UPS" in relation to IT Infrastructure</p> <ul style="list-style-type: none"> <input type="radio"/> Uninterrupted power source - (Alternative 4) <input type="radio"/> Uninterrupted Proper Supply - (Alternative 2) <input checked="" type="radio"/> Uninterruptible Power Supply - (Alternative 3) <input type="radio"/> Uniform Power Supply - (Alternative 1)
<p>Question No.14 1.00</p> <p style="text-align: right;">Bookmark <input type="checkbox"/></p> <p>Which of the following is caused due to overgrazing?</p> <ul style="list-style-type: none"> <input type="radio"/> Retention of useful species - (Alternative 1) <input type="radio"/> Productive soil - (Alternative 2) <input checked="" type="radio"/> Desertification and erosion - (Alternative 3) <input type="radio"/> Soil will become poisoned - (Alternative 4)
<p>Question No.15 1.00</p> <p style="text-align: right;">Bookmark <input type="checkbox"/></p> <p>Who fought against British army in the First Anglo Mysore war during 1767-1769?</p> <ul style="list-style-type: none"> <input checked="" type="radio"/> Hyder Ali - (Alternative 1) <input type="radio"/> Tipu Sultan - (Alternative 2) <input type="radio"/> Krishnaraja Wodeyar - (Alternative 3) <input type="radio"/> Nanjaraja Wodeyar - (Alternative 4)
<p>Question No.16 1.00</p> <p style="text-align: right;">Bookmark <input type="checkbox"/></p> <p>"Centre for Mining Environment" is located in which city?</p> <ul style="list-style-type: none"> <input type="radio"/> Chakradarpur - (Alternative 3) <input type="radio"/> Netarhat - (Alternative 4) <input checked="" type="radio"/> Dhanbad - (Alternative 1) <input type="radio"/> Jamshedpur - (Alternative 2)
<p>Question No.17 1.00</p> <p style="text-align: right;">Bookmark <input type="checkbox"/></p> <p>Which is called the "Roof of the world"?</p> <ul style="list-style-type: none"> <input type="radio"/> The Alps - (Alternative 4) <input checked="" type="radio"/> The Tibet - (Alternative 2) <input type="radio"/> The Himalayas - (Alternative 3) <input type="radio"/> The Apennines - (Alternative 1)

Question No.18

1.00

Bookmark ☐

Where is the headquarters of Reserve Bank of India?

- ☐ Kolkata - (Alternative 3)
- ☐ New Delhi - (Alternative 2)
- ☐ Chennai - (Alternative 4)
- ☒ **Mumbai - (Alternative 1)**

Question No.19

1.00

Bookmark ☐

Government has appointed Mr. S Gurumurthy as the part time director of

- ☒ **NABARD - (Alternative 2)**
- ☐ IDBI - (Alternative 4)
- ☐ **RBI - (Alternative 3)**
- ☐ SBI - (Alternative 1)

Question No.20

1.00

Bookmark ☐

IRDA regulates the functioning of

- ☐ Capital market business - (Alternative 1)
- ☐ Banking business - (Alternative 4)
- ☐ Initial Public Offers - (Alternative 3)
- ☒ **Insurance business - (Alternative 2)**

Section 2 - WORKING ENGLISH**Question No.1**

1.00

Bookmark ☐

Choose the best antonym for the word "OPTIMISTIC".

- ☐ Wilful - (Alternative 2)
- ☐ Caring - (Alternative 4)
- ☒ **Doubtful - (Alternative 3)**
- ☐ Hopeful - (Alternative 1)

Question No.2

1.00

Bookmark ☐

The tall man is holding the umbrella _____ his head.

- ☐ by - (Alternative 3)
- ☐ for - (Alternative 4)
- ☒ **over - (Alternative 1)**
- ☐ about - (Alternative 2)

Question No.3

1.00

Bookmark ☐

Choose the Word that best expresses the meaning of the word "RESTORE".

- ☐ Strike - (Alternative 2)
- ☐ Drench - (Alternative 4)

- ☒ **Rebuild - (Alternative 1)**
- ☐ Pretend - (Alternative 3)

Question No.4

1.00

Bookmark ☐

There are four different words out of which one is correctly spelt. Find the correctly spelt word and mark that as your answer.

1. Scool
 2. Colllege
 3. University
 4. Departmant
- ☐ Scool - (Alternative 1)
 - ☐ Departmant - (Alternative 4)
 - ☒ **University - (Alternative 3)**
 - ☐ Colllege - (Alternative 2)

Question No.5

1.00

Bookmark ☐

Choose the Word that best expresses the meaning of the word "ENIGMATIC".

- ☒ **Straightforward - (Alternative 3)**
- ☐ Prompting - (Alternative 2)
- ☐ Momentary - (Alternative 4)
- ☐ **Puzzling - (Alternative 1)**

Question No.6

1.00

Bookmark ☐

The Indian government announced _____ amalgamation of three public sector lenders.

- ☐ No article - (Alternative 4)
- ☐ a - (Alternative 2)
- ☒ an - (Alternative 1)
- ☐ **the - (Alternative 3)**

Question No.7

1.00

Bookmark ☐

There are four different words out of which one is correctly spelt. Find the correctly spelt word and mark that as your answer.

1. Playars
 2. Cricketers
 3. Bovlers
 4. batsmens
- ☐ Batismens - (Alternative 4)
 - ☐ Playars - (Alternative 1)
 - ☒ **Cricketers - (Alternative 2)**
 - ☐ Bovlers - (Alternative 3)

Question No.8

1.00

Bookmark ☐

Choose the Word that best expresses the meaning of the word "COLLAPSE".

- ☐ Combine - (Alternative 1)

27/11/2018

View Question Paper

- ☐ Prepare - (Alternative 3)
- ☒ **Fall - (Alternative 2)**
- ☐ Crack - (Alternative 4)

Question No.9

1.00

Bookmark ☐

I went to _____ hotel where you and I usually go.

- ☒ an - (Alternative 2)
- ☐ a - (Alternative 1)
- ☒ **the - (Alternative 3)**
- ☐ No article - (Alternative 4)

Question No.10

1.00

Bookmark ☐

Choose the Word that best expresses the meaning of the word "AVAIL".

- ☒ **Help - (Alternative 2)**
- ☐ Try - (Alternative 4)
- ☒ Capture - (Alternative 3)
- ☐ Repeat - (Alternative 1)

Question No.11

1.00

Bookmark ☐

Choose the best antonym for the word "WEALTHY".

- ☐ Ample - (Alternative 2)
- ☐ Abundant - (Alternative 4)
- ☒ **Penniless - (Alternative 3)**
- ☐ Rich - (Alternative 1)

Question No.12

1.00

Bookmark ☐

Choose the Word that best expresses the meaning of the word "FORCE".

- ☐ Drill - (Alternative 4)
- ☒ **Push - (Alternative 3)**
- ☐ Clarify - (Alternative 2)
- ☐ Repeat - (Alternative 1)

Question No.13

1.00

Bookmark ☐

There are four different words out of which one is correctly spelt. Find the correctly spelt word and mark that as your answer.

1. Scholer
2. Learnd
3. Bookish
4. Mismanege

- ☐ Scholer - (Alternative 1)
- ☒ **Bookish - (Alternative 3)**
- ☐ Mismanege - (Alternative 4)

27/11/2018

View Question Paper

☐ Learnd - (Alternative 2)**Question No.14**

1.00

Bookmark ☐

There are four different words out of which one is correctly spelt. Find the correctly spelt word and mark that as your answer.

1. Manage
2. Damege
3. Lugage
4. Showar

- ☐ Lugage - (Alternative 3)
- ☐ Damege - (Alternative 2)
- ☒ **Manage - (Alternative 1)**
- ☐ Showar - (Alternative 4)

Question No.15

1.00

Bookmark ☐

He left _____ Chennai on the night of 20th September.

- ☐ into - (Alternative 3)
- ☐ on - (Alternative 2)
- ☒ **to - (Alternative 4)**
- ☐ in - (Alternative 1)

Question No.16

1.00

Bookmark ☐

This is the mountain through which _____ first tunnel is being bored.

- ☐ No article - (Alternative 4)
- ☐ a - (Alternative 1)
- ☐ an - (Alternative 3)
- ☒ **the - (Alternative 2)**

Question No.17

1.00

Bookmark ☐

He went to Nasik to take a dip in _____ river Godavari.

- ☐ an - (Alternative 2)
- ☐ a - (Alternative 1)
- ☒ **the - (Alternative 3)**
- ☐ No article - (Alternative 4)

Question No.18

1.00

Bookmark ☐

You must come home _____ six O' clock in the evening.

- ☐ for - (Alternative 2)
- ☐ to - (Alternative 1)
- ☒ **by - (Alternative 4)**
- ☐ from - (Alternative 3)

Question No.19

1.00

Bookmark ☐

Choose the best antonym for the word "FALSE".

- ☒ Valid - (Alternative 2)
- ☐ Serious - (Alternative 3)
- ☐ Natural - (Alternative 4)
- ☐ Irrelevant - (Alternative 1)

Question No.20

1.00

Bookmark ☐

Choose the best antonym for the word "ACKNOWLEDGE".

- ☐ Concede - (Alternative 3)
- ☒ Deny - (Alternative 4)
- ☐ Accept - (Alternative 2)
- ☐ Agree - (Alternative 1)

Section 3 - GENERAL APTITUDE**Question No.1**

1.00

Bookmark ☐

15% of 35% of a number is 420. Find the value of the number.

- ☒ 8000 - (Alternative 3)
- ☐ 24000 - (Alternative 2)
- ☐ 16500 - (Alternative 1)
- ☐ 800 - (Alternative 4)

Question No.2

1.00

Bookmark ☐

What will come in place of the question mark(?) in the following series?
8, 11, 14, ?, 20, 23

- ☒ 17 - (Alternative 3)
- ☐ 16 - (Alternative 1)
- ☐ 15 - (Alternative 2)
- ☐ 19 - (Alternative 4)

Question No.3

1.00

Bookmark ☐

What will come in place of the question mark(?) in the following series?
2L, 6J, 18H, ?, 162D

- ☒ 54F - (Alternative 4)
- ☐ 52E - (Alternative 3)
- ☐ 56E - (Alternative 1)
- ☐ 54D - (Alternative 2)

Question No.4

1.00

Bookmark ☐

Pointing to a boy, Gokul said "He is the son of sister of only son of my grandfather". How is the boy related to Gokul?

- ☐ Uncle - (Alternative 2)
- ☐ Sister - (Alternative 3)

27/11/2018

View Question Paper

- ☒ Brother-in-law - (Alternative 4)
- ☐ Cousin - (Alternative 1)

Question No.5

1.00

Bookmark ☐

If Jose is 2 times efficient as Alex, Alex can finish the job in 12 days. In how many days Jose can finish the work?

- ☐ 12 - (Alternative 2)
- ☒ 6 - (Alternative 4)
- ☐ 4 - (Alternative 3)
- ☐ 16 - (Alternative 1)

Question No.6

1.00

Bookmark ☐

Find the odd one from the given series
15, 20, 45, 60, 75, 90

- ☐ 45 - (Alternative 2)
- ☐ 90 - (Alternative 4)
- ☐ 75 - (Alternative 3)
- ☒ 20 - (Alternative 1)

Question No.7

1.00

Bookmark ☐

Replace the question mark with the same logic followed in the first pair
67:135::93:?

- ☐ 192 - (Alternative 4)
- ☒ 187 - (Alternative 2)
- ☐ 185 - (Alternative 1)
- ☐ 189 - (Alternative 3)

Question No.8

1.00

Bookmark ☐

If the average age of the class of 7 members is 20, then find the average age of class after 12 years.

- ☐ 36 - (Alternative 4)
- ☒ 32 - (Alternative 1)
- ☐ 34 - (Alternative 2)
- ☐ 35 - (Alternative 3)

Question No.9

1.00

Bookmark ☐

Dhoni can finish the job in 18 days and Kim can finish the same job in 27 days. How many days will they require to complete the entire work if they work together?

- ☐ $13\frac{2}{5}$ - (Alternative 2)
- ☐ $14\frac{4}{5}$ - (Alternative 1)
- ☒ $10\frac{4}{5}$ - (Alternative 3)
- ☐ $12\frac{3}{4}$ - (Alternative 4)

Question No.10

1.00

27/11/2018

View Question Paper

Bookmark ☐

In a certain code language, 'ACTIVISTS' is written as 'BDUJWJTUT'. How is 'STATEMENT' written in that code language?

- ☐ TUBUFNFUO - (Alternative 2)
- ☐ TUFUBNFOU - (Alternative 4)
- ☐ TUBUFFNOU - (Alternative 3)
- ☒ TUBUFNFOU - (Alternative 1)

Question No.11

1.00

Bookmark ☐

The cost of petrol is increased by 25%, how much should the consumption be reduced that the price remains the same?

- ☐ 33.33% - (Alternative 4)
- ☒ 16.66% - (Alternative 1)
- ☐ 25% - (Alternative 3)
- ☐ 20% - (Alternative 2)

Question No.12

1.00

Bookmark ☐

Jack Kallis travels certain distance at a speed of 35 kmph and returns at a speed of 25 kmph. Find the average speed of the entire journey.

- ☐ 48.33kmph - (Alternative 1)
- ☒ 54.55kmph - (Alternative 4)
- ☐ 36.44kmph - (Alternative 3)
- ☐ 29.16kmph - (Alternative 2)

Question No.13

1.00

Bookmark ☐

Solve : $(3.9 \times 3.9) + (1.3 \times 1.3) + 7$

- ☐ 20 - (Alternative 4)
- ☐ 17 - (Alternative 2)
- ☒ 16 - (Alternative 1)
- ☐ 18 - (Alternative 3)

Question No.14

1.00

Bookmark ☐

If $(g^2 + h^2) = 58$, $gh = 21$, find the value for g and h, if g and h are positive integers.

- ☐ 3,8 - (Alternative 4)
- ☒ 7,3 - (Alternative 2)
- ☐ -7,-3 - (Alternative 1)
- ☐ 7,4 - (Alternative 3)

Question No.15

1.00

Bookmark ☐

Find the $K^2 - J^2$, if $(K+J) = 9$ and $(K-J) = 5$

- ☐ 90 - (Alternative 4)
- ☒ 45 - (Alternative 1)
- ☐ 63 - (Alternative 3)
- ☐ 40 - (Alternative 2)

Question No.16

1.00

Bookmark ☐

Find 15% of Rs.1,50,000.

- ☐ Rs.33,500 - (Alternative 3)
- ☒ Rs.22,500 - (Alternative 1)
- ☐ Rs.24,500 - (Alternative 4)
- ☐ Rs.32,500 - (Alternative 2)

Question No.17

1.00

Bookmark ☐

Find the odd letter from the given series
D, G, J, M, P, T

- ☐ P - (Alternative 1)
- ☐ J - (Alternative 4)
- ☐ M - (Alternative 3)
- ☒ T - (Alternative 2)

Question No.18

1.00

Bookmark ☐

If day before yesterday was Friday, then what would be the day on day after tomorrow ?

- ☐ Thursday - (Alternative 1)
- ☐ Monday - (Alternative 4)
- ☒ Tuesday - (Alternative 3)
- ☐ Sunday - (Alternative 2)

Question No.19

1.00

Bookmark ☐

Latha is facing East, she turns left then turns right and finally turns left. Now which direction is she facing?

- ☐ North-East - (Alternative 2)
- ☒ North - (Alternative 3)
- ☐ North-West - (Alternative 1)
- ☐ West - (Alternative 4)

Question No.20

1.00

Bookmark ☐

Replace the question mark with the same logic followed in the first pair
TWMRY:WTMYR::SNQLZ:?

- ☐ NSQLZ - (Alternative 2)
- ☒ NSQZL - (Alternative 3)

27/11/2018

View Question Paper

- ☐ LSQZN - (Alternative 4)
- ☐ NQSZL - (Alternative 1)

Question No.21

1.00

Bookmark ☐

What would be the number of students in the school, if 25% of the total students is 1500?

- ☐ 9000 - (Alternative 2)
- ☐ 3000 - (Alternative 1)
- ☒ 6000 - (Alternative 4)
- ☐ 7000 - (Alternative 3)

Question No.22

1.00

Bookmark ☐

A is the son of Q, who is the brother of C, who is the daughter of T. How is A related to T?

- ☐ Grandmother - (Alternative 1)
- ☐ Granddaughter - (Alternative 4)
- ☒ Grandson - (Alternative 3)
- ☐ Grandfather - (Alternative 2)

Question No.23

1.00

Bookmark ☐

If 1st January of 2220 falls on Thursday, then what will be the day on December 31st 2220?

- ☒ Friday - (Alternative 1)
- ☐ Wednesday - (Alternative 4)
- ☐ Thursday - (Alternative 3)
- ☐ Monday - (Alternative 2)

Question No.24

1.00

Bookmark ☐

The average weight of 5 urea bags is 120 kg. Find the average weight of the same 5 urea bags, when each urea bag's weight is increased by 12 kg.

- ☐ 136 kg - (Alternative 3)
- ☐ 135 kg - (Alternative 1)
- ☒ 132 kg - (Alternative 4)
- ☐ 134 kg - (Alternative 2)

Question No.25

1.00

Bookmark ☐

If Jins rides at a speed of 25m/s, what will be the distance after 1.5 hours of the journey?

- ☐ 140km - (Alternative 2)
- ☐ 155km - (Alternative 3)
- ☒ 135km - (Alternative 1)
- ☐ 160km - (Alternative 4)

Question No.26

1.00

Bookmark ☐

What will come in place of the question mark(?) in the following series?
HP, JQ, LR, NS, ?

- ☒ PT - (Alternative 2)

27/11/2018

View Question Paper

- ☐ OT - (Alternative 4)
- ☐ OS - (Alternative 3)
- ☒ PS - (Alternative 1)

Question No.27

1.00

Bookmark ☐

Find the average of 12.3, 23.4, 34.5, 45.6, 56.7

- ☒ 34.5 - (Alternative 4)
- ☐ 35.5 - (Alternative 3)
- ☐ 23.5 - (Alternative 2)
- ☐ 22.6 - (Alternative 1)

Question No.28

1.00

Bookmark ☐

If August 22nd of 2022 falls on Tuesday, then on which day August 22nd of 2024 will fall?

- ☐ Monday - (Alternative 3)
- ☐ Tuesday - (Alternative 4)
- ☒ Friday - (Alternative 2)
- ☐ Thursday - (Alternative 1)

Question No.29

1.00

Bookmark ☐

Anith earned a profit of Rs.64, when he sold his Watch for Rs.384. Find his profit percentage

- ☐ 25% - (Alternative 2)
- ☐ 15% - (Alternative 1)
- ☒ 20% - (Alternative 4)
- ☐ 35% - (Alternative 3)

Question No.30

1.00

Bookmark ☐

If the first and second letters in the word 'SCIENTIFIC' were interchanged, also the third and the fourth letters, the fifth and the sixth letters and so on, which of the following would be the seventh letter from the right?

- ☐ R - (Alternative 4)
- ☐ E - (Alternative 3)
- ☒ I - (Alternative 1)
- ☐ S - (Alternative 2)

Question No.31

1.00

Bookmark ☐

Solve: $526 - 4 + 14 \div 7 \times 2$

- ☐ 576 - (Alternative 4)
- ☐ 566 - (Alternative 1)
- ☒ 526 - (Alternative 3)
- ☐ 520 - (Alternative 2)

Question No.32

1.00

Bookmark ☐

27/11/2018

View Question Paper

David walks 4m towards East, then takes right turn and walks 3m, finally turns towards West and walks 7m. Now he is in which direction from the starting point?

- ☐ North-West - (Alternative 3)
- ☒ **South-West - (Alternative 4)**
- ☐ North-East - (Alternative 1)
- ☐ South-East - (Alternative 2)

Question No.33

1.00

Bookmark ☐

In a certain code language, 'RESIDENCE' is written as 'SDTHEDOBF'. How is 'PROFESSOR' written in that code language?

- ☒ **QQPEFRTNS - (Alternative 3)**
- ☐ QQPFFERTNS - (Alternative 4)
- ☐ QQPEFTRNS - (Alternative 2)
- ☐ QPQEFRTNS - (Alternative 1)

Question No.34

1.00

Bookmark ☐

If in the word UNIVERSITY, all the consonants are replaced by the previous letter in the alphabet and all vowels are replaced by the next letter and then all the letters are arranged alphabetically, Now how many letters remain unchanged from the previous position?

- ☐ Four - (Alternative 1)
- ☐ One - (Alternative 3)
- ☐ Three - (Alternative 2)
- ☒ **Two - (Alternative 4)**

Question No.35

1.00

Bookmark ☐

Find the value of $(k^2 - 14) \div (k - 2)$, when $k = 12$

- ☐ 14 - (Alternative 1)
- ☐ 11 - (Alternative 4)
- ☐ 16 - (Alternative 2)
- ☒ **13 - (Alternative 3)**

Section 4 - ELECTRICAL**Question No.1**

1.00

Bookmark ☐

_____ is used to provide artificial neutral earthing where neutral point is not accessible.

- ☒ **Earth transformer - (Alternative 3)**
- ☐ Power transformer - (Alternative 1)
- ☐ Potential transformer - (Alternative 4)
- ☐ Current transformer - (Alternative 2)

Question No.2

1.00

Bookmark ☐

The spiral hair springs used in moving coil ammeter are made up of -----.

27/11/2018

View Question Paper

- ☐ Platinum - bronze - (Alternative 1)
- ☒ **Phosphor-bronze - (Alternative 4)**
- ☐ Phosphor - brass - (Alternative 3)
- ☐ Phosphor - copper - (Alternative 2)

Question No.3

1.00

Bookmark ☐

In lap winding of a DC generator, the number of parallel paths is equal to _____

- ☐ 2 - (Alternative 1)
- ☒ **Number of poles - (Alternative 2)**
- ☐ 1 - (Alternative 3)
- ☐ Number of Interpoles - (Alternative 4)

Question No.4

1.00

Bookmark ☐

In three phase transformer, negative voltage regulation occurs at _____

- ☐ Unity power factor - (Alternative 3)
- ☐ Lagging power factor - (Alternative 2)
- ☐ Rated KVA of transformer - (Alternative 4)
- ☒ **Leading power factor - (Alternative 1)**

Question No.5

1.00

Bookmark ☐

The number of cycles completed by an AC quantity in one second is called as -----.

- ☐ period - (Alternative 1)
- ☒ **frequency - (Alternative 2)**
- ☐ power factor - (Alternative 4)
- ☐ RMS current - (Alternative 3)

Question No.6

1.00

Bookmark ☐

In railway electrification, the circuit breaker used is _____

- ☐ SF6 circuit breaker - (Alternative 1)
- ☐ Bulk oil circuit breaker - (Alternative 3)
- ☒ **Airblast circuit breaker - (Alternative 2)**
- ☐ Minimum oil circuit breaker - (Alternative 4)

Question No.7

1.00

Bookmark ☐

An open circuit test on a transformer gives _____

- ☐ Copper loss - (Alternative 2)
- ☐ Mechanical loss - (Alternative 4)
- ☒ **Core loss - (Alternative 1)**
- ☐ Stray loss - (Alternative 3)

Question No.8

1.00

Bookmark ☐

The synchronous speed 3 phase, 50 Hz, 2 pole double cage induction motor is -----.

27/11/2018

View Question Paper

- ☐ 6000 RPM - (Alternative 3)
- ☒ **3000 RPM - (Alternative 4)**
- ☐ 1000 RPM - (Alternative 2)
- ☐ 1500 RPM - (Alternative 1)

Question No.9

1.00

Bookmark ☐

_____ gate is called as a complement of OR gate.

- ☐ NOT - (Alternative 1)
- ☒ **NOR - (Alternative 3)**
- ☐ NAND - (Alternative 2)
- ☐ AND - (Alternative 4)

Question No.10

1.00

Bookmark ☐

Which fuel is used in nuclear reactor ?

- ☐ Lead - (Alternative 3)
- ☐ Graphite - (Alternative 2)
- ☒ **Uranium - (Alternative 1)**
- ☐ Heavy water - (Alternative 4)

Question No.11

1.00

Bookmark ☐

An Example for a ferro-magnetic material is-----

- ☐ Manganese - (Alternative 4)
- ☒ **Nickel - (Alternative 1)**
- ☐ Aluminium - (Alternative 2)
- ☐ Copper - (Alternative 3)

Question No.12

1.00

Bookmark ☐

Cables used for 220 kV lines are _____ insulated.

- ☐ Paper - (Alternative 2)
- ☒ **Compressed oil - (Alternative 1)**
- ☐ PVC - (Alternative 4)
- ☐ Mica - (Alternative 3)

Question No.13

1.00

Bookmark ☐

The main function of under voltage protective device generally employed with a motor starter is to

- ☒ **open the supply circuit on failure of power supply - (Alternative 1)**
- ☐ control the motor voltage - (Alternative 2)
- ☐ decrease the supply voltage - (Alternative 4)
- ☐ prevent the opening of supply circuit - (Alternative 3)

Question No.14

1.00

Bookmark ☐

What is the binary equivalent of the decimal number 13?

27/11/2018

View Question Paper

- ☐ 1111 - (Alternative 1)
- ☐ 1011 - (Alternative 3)
- ☒ 1101 - (Alternative 4)
- ☐ 1001 - (Alternative 2)

Question No.15

1.00

Bookmark ☐

Which one is the correct formula to find out the frequency of an alternator?

- ☐ 120P/N - (Alternative 1)
- ☐ 120/NP - (Alternative 4)
- ☒ NP/120 - (Alternative 3)
- ☐ 120N/P - (Alternative 2)

Question No.16

1.00

Bookmark ☐

Earth fault relays are _____

- ☒ Non-directional relays - (Alternative 2)
- ☐ Distance relays - (Alternative 1)
- ☐ Short operate time relays - (Alternative 3)
- ☐ Long operate time relays - (Alternative 4)

Question No.17

1.00

Bookmark ☐

Which stepper motor gives excellent angular resolution and low torque?

- ☐ Permanent magnet stepper motor - (Alternative 2)
- ☐ Variable Inductance stepper motor - (Alternative 3)
- ☒ Variable reluctance stepper motor - (Alternative 1)
- ☐ Variable resistance stepper motor - (Alternative 4)

Question No.18

1.00

Bookmark ☐

What is the name of the power generating station which uses coal as a fuel?

- ☐ Atomic power station - (Alternative 2)
- ☒ Thermal power station - (Alternative 1)
- ☐ Low pressure Mercury Voltage lamps - (Alternative 4)
- ☐ Nuclear power station - (Alternative 3)

Question No.19

1.00

Bookmark ☐

MOSFET is used in _____ switching frequency application.

- ☐ Least - (Alternative 4)
- ☒ High - (Alternative 2)
- ☐ Low - (Alternative 1)
- ☐ Very low - (Alternative 3)

Question No.20

1.00

Bookmark ☐

PMMC voltmeter is an example for which type of instrument?

27/11/2018

View Question Paper

- ☐ Digital type - (Alternative 4)
- ☒ **Indicating type - (Alternative 1)**
- ☐ Recording type - (Alternative 3)
- ☐ Integrating type - (Alternative 2)

Question No.21

1.00

Bookmark ☐

_____ is used to convert DC to AC voltage.

- ☐ Chopper - (Alternative 2)
- ☒ **Inverter - (Alternative 4)**
- ☐ Rectifier - (Alternative 1)
- ☐ Cyclo converter - (Alternative 3)

Question No.22

1.00

Bookmark ☐

Which one of the following laws deals with electrolysis?

- ☒ **Faraday's law - (Alternative 4)**
- ☐ Joule's law - (Alternative 3)
- ☐ Ohm's law - (Alternative 1)
- ☐ Kirchhoff's law - (Alternative 2)

Question No.23

1.00

Bookmark ☐

In the 3 phase double squirrel cage induction motor, the outer cage is wound with bars having _____,

- ☐ low resistance and high inductance - (Alternative 4)
- ☒ **high resistance and low reactance - (Alternative 1)**
- ☐ high resistance and high inductance - (Alternative 2)
- ☐ low resistance and low inductance - (Alternative 3)

Question No.24

1.00

Bookmark ☐

The full form of RCCB is -----.

- ☐ Remaining Current Circuit Breaker - (Alternative 2)
- ☒ **Residual Current Circuit Breaker - (Alternative 3)**
- ☐ Return Current Circuit Breaker - (Alternative 1)
- ☐ Rated Current Circuit Breaker - (Alternative 4)

Question No.25

1.00

Bookmark ☐

_____ can be used to step up DC voltage.

- ☐ Inverter - (Alternative 2)
- ☒ **Chopper - (Alternative 1)**
- ☐ Snubber - (Alternative 4)
- ☐ Cyclo converter - (Alternative 3)

Question No.26

1.00

Bookmark ☐

27/11/2018

View Question Paper

The unit of conductivity is _____

- ☒ mho/meter - (Alternative 1)
- ☐ ohm/sq.m - (Alternative 4)
- ☐ ohm/m - (Alternative 3)
- ☐ mho/sq.m - (Alternative 2)

Question No.27

1.00

Bookmark ☐

Power factor is given by _____

- ☒ Real power/Apparent power - (Alternative 1)
- ☐ Reactive power/Apparent power - (Alternative 2)
- ☐ Apparent power/Real power - (Alternative 3)
- ☐ Apparent power/Reactive power - (Alternative 4)

Question No.28

1.00

Bookmark ☐

In delta connection if the line voltage is 1732 V then what will be the phase voltage?

- ☐ 173.2 V - (Alternative 1)
- ☐ 1000 V - (Alternative 4)
- ☒ 1732 V - (Alternative 2)
- ☐ 3000 V - (Alternative 3)

Question No.29

1.00

Bookmark ☐

The HT winding of a single phase transformer is wound with-----.

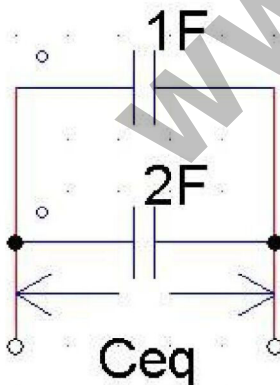
- ☐ more number of turns in relatively thick wire - (Alternative 3)
- ☐ less number of turns in relatively thin wire - (Alternative 1)
- ☒ more number of turns in relatively thin wire - (Alternative 2)
- ☐ less number of turns in relatively thick wire - (Alternative 4)

Question No.30

1.00

Bookmark ☐

The equivalent capacitance of the given circuit is _____



- ☐ 2F - (Alternative 2)
- ☒ 3F - (Alternative 3)
- ☐ 4F - (Alternative 4)
- ☐ 1F - (Alternative 1)

Question No.31

1.00

Bookmark ☐

The resistance of a copper conductor is -----.

- ☐ more than the resistance of Aluminium - (Alternative 3)
- ☐ less than the resistance of silver - (Alternative 1)
- ☐ more than the resistance of gold - (Alternative 2)
- ☒ **more than the resistance of silver - (Alternative 4)**

Question No.32

1.00

Bookmark ☐

In alternator winding, the numerical value of the pitch factor will always be -----.

- ☐ equal to distribution factor - (Alternative 1)
- ☒ **less than unity - (Alternative 3)**
- ☐ more than unity - (Alternative 4)
- ☐ equal to unity - (Alternative 2)

Question No.33

1.00

Bookmark ☐

In three phase delta connection, Line voltage is equal to _____

- ☒ **Phase voltage - (Alternative 1)**
- ☐ Phase Current/ $\sqrt{3}$ - (Alternative 4)
- ☐ Phase current - (Alternative 2)
- ☐ Phase Voltage/ $\sqrt{3}$ - (Alternative 3)

Question No.34

1.00

Bookmark ☐

The resistance of shunt field 500 V DC shunt generator is 200 ohms. What will be the field current?

- ☐ 0.8 Amps - (Alternative 2)
- ☐ 10 Amps - (Alternative 1)
- ☒ **2.5 Amps - (Alternative 3)**
- ☐ 7 Amps - (Alternative 4)

Question No.35

1.00

Bookmark ☐

Heating element of a water heater is made of -----.

- ☐ Nickel - (Alternative 1)
- ☐ Tungsten - (Alternative 3)
- ☒ **Nichrome - (Alternative 4)**
- ☐ Constantan - (Alternative 2)

Question No.36

1.00

Bookmark ☐

What is the SI unit of specific resistance?

- ☐ Ohm / metre - (Alternative 1)
- ☐ Ohm - (Alternative 3)
- ☒ **Ohm-metre - (Alternative 2)**
- ☐ Metre / ohm - (Alternative 4)

Question No.37

1.00

Bookmark ☐

What is the numerical value of the form factor of the pure AC sine wave?

- ☐ 0.636 - (Alternative 2)
- ☐ 1.412 - (Alternative 4)
- ☐ 0.707 - (Alternative 3)
- ☒ 1.11 - (Alternative 1)

Question No.38

1.00

Bookmark ☐

The difference of level between the points of support and the lower point of the conductor of a transmission line is -----.

- ☐ Span - (Alternative 4)
- ☐ Clearance - (Alternative 3)
- ☐ Slag - (Alternative 1)
- ☒ Sag - (Alternative 2)

Question No.39

1.00

Bookmark ☐

One millivolt is equal to -----.

- ☐ 0.1 volt - (Alternative 3)
- ☒ 0.001 volt - (Alternative 1)
- ☐ 0.01 volt - (Alternative 2)
- ☐ 0.1000 volt - (Alternative 4)

Question No.40

1.00

Bookmark ☐

Which type of rotor is best suitable for medium and slow speed operation in synchronous motor ?

- ☒ Salient pole rotor - (Alternative 1)
- ☐ Smooth cylindrical type rotor - (Alternative 2)
- ☐ Split ring rotor - (Alternative 4)
- ☐ Slip ring rotor - (Alternative 3)

Question No.41

1.00

Bookmark ☐

_____ relay has the capability to detect a major fault in transformer.

- ☒ Buchholz - (Alternative 2)
- ☐ Distance - (Alternative 3)
- ☐ Directional - (Alternative 4)
- ☐ Over current - (Alternative 1)

Question No.42

1.00

Bookmark ☐

The supply frequency of a three-phase induction motor having 'P' number of poles with synchronous speed 'Ns' is given as _____

- ☐ $f = 120P/f$ - (Alternative 4)
- ☐ $f = 120N_s/P$ - (Alternative 1)
- ☒ $f = N_s P / 120$ - (Alternative 3)

27/11/2018

View Question Paper

☐ $f = N_s P / 60$ - (Alternative 2)
Question No.43

1.00

Bookmark ☐

Rectifier is used to convert _____ voltage.

- ☒ **AC to DC - (Alternative 3)**
- ☐ AC to AC - (Alternative 1)
- ☐ DC to AC - (Alternative 4)
- ☐ DC to DC - (Alternative 2)

Question No.44

1.00

Bookmark ☐

The value of the capacitive reactance of a capacitor when it is connected with AC supply will be ---
-----.

- ☒ **inversely proportional to the supply frequency - (Alternative 3)**
- ☐ directly proportional to the supply voltage - (Alternative 1)
- ☐ inversely proportional to the supply voltage - (Alternative 2)
- ☐ directly proportional to the supply frequency - (Alternative 4)

Question No.45

1.00

Bookmark ☐

The unit of electric field intensity is _____

- ☒ **Coulomb/m² - (Alternative 2)**
- ☐ Weber - (Alternative 3)
- ☐ Coulomb - (Alternative 1)
- ☐ **Newton/Coulomb - (Alternative 4)**

Question No.46

1.00

Bookmark ☐

The DC series motor should be connected with the load by means of -----.

- ☒ **direct coupling drive - (Alternative 4)**
- ☐ direct V belt drive - (Alternative 1)
- ☐ direct chain drive - (Alternative 3)
- ☐ direct flat belt drive - (Alternative 2)

Question No.47

1.00

Bookmark ☐

If two inductors of 2mH and 3mH are connected in series across the 250V 50Hz AC supply, then the total inductive reactance will be -----

- ☐ 31.42 Ohms - (Alternative 3)
- ☒ **1.57 Ohms - (Alternative 4)**
- ☐ 3.142 Ohms - (Alternative 2)
- ☐ 5 Ohms - (Alternative 1)

Question No.48

1.00

Bookmark ☐

Which is the passive component in terms of electronics?

- ☒ **Resistor - (Alternative 4)**
- ☐

27/11/2018

View Question Paper

SCR - (Alternative 1)

☐ Transistor - (Alternative 3)☐ Diode - (Alternative 2)**Question No.49**

1.00

Bookmark ☐

The unit of resistance is expressed in terms of _____

☐ mho - (Alternative 2)☐ ohm/m - (Alternative 3)☒ ohm - (Alternative 1)☐ m/ohm - (Alternative 4)**Question No.50**

1.00

Bookmark ☐

How many number of parallel paths will be in simplex 4 pole wave winding?

☐ 4 - (Alternative 2)☐ 8 - (Alternative 4)☒ 2 - (Alternative 1)☐ 6 - (Alternative 3)**Question No.51**

1.00

Bookmark ☐

Skin effect in a conductor becomes more pronounced _____

☐ at lower frequency - (Alternative 2)☐ at DC voltage - (Alternative 3)☒ at Ramp voltage - (Alternative 4)☐ at high frequency - (Alternative 1)**Question No.52**

1.00

Bookmark ☐

In three point starter, the overload release coil operates, if _____ current increases beyond set limit.

☐ Armature - (Alternative 2)☐ Field - (Alternative 1)☒ Line - (Alternative 4)☐ Neutral - (Alternative 3)**Question No.53**

1.00

Bookmark ☐

How much of copper will be liberated during electrolysis when two coulomb charge is passed through it? Assume the ECE of copper is 9.8mg /cc.

☒ 9.8 mg - (Alternative 1)☐ 19.6 mg - (Alternative 2)☐ 1.96 mg - (Alternative 3)☐ 4.9 mg - (Alternative 4)**Question No.54**

1.00

Bookmark ☐

What is the full form of LPMV lamps?

27/11/2018

View Question Paper

- ☐ Low Potential Mercury Vapour lamps - (Alternative 1)
- ☒ **Low Pressure Mercury Vapour lamps - (Alternative 3)**
- ☐ Low Pressure Metal Voltage lamps - (Alternative 2)
- ☐ Low pressure Mercury Voltage lamps - (Alternative 4)

Question No.55

1.00

Bookmark ☐

What is the purpose of armouring in the UG cable?

- ☐ Protect the cable from entering of water - (Alternative 2)
- ☐ Insulate the sheath of the cable. - (Alternative 4)
- ☒ **Protect the cable from mechanical injury - (Alternative 3)**
- ☐ Protect the cable from corrosion - (Alternative 1)

Question No.56

1.00

Bookmark ☐

A SCR is a _____ switch.

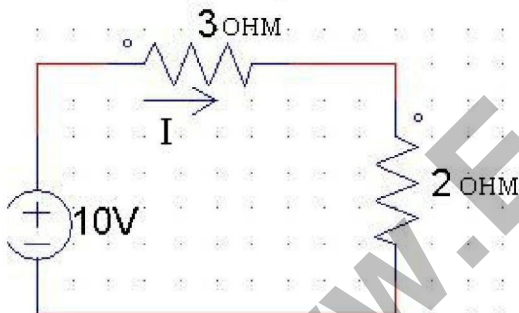
- ☐ Four directional - (Alternative 4)
- ☒ **unidirectional - (Alternative 1)**
- ☐ Three directional - (Alternative 3)
- ☐ bidirectional - (Alternative 2)

Question No.57

1.00

Bookmark ☐

Find the current through 2 ohm resistor



- ☒ **2A - (Alternative 1)**
- ☐ 8A - (Alternative 4)
- ☐ 6A - (Alternative 3)
- ☐ 4A - (Alternative 2)

Question No.58

1.00

Bookmark ☐

What is the full form of RCC poles?

- ☐ Reinforced Concrete column - (Alternative 4)
- ☐ Residual Cement Column - (Alternative 2)
- ☐ Reinforced Cement Column - (Alternative 3)
- ☒ **Reinforced Cement concrete - (Alternative 1)**

Question No.59

1.00

Bookmark ☐

27/11/2018

View Question Paper

In an atom, the number of electrons which can be accommodated in L shell (or) orbit is -----.

- ☐ 4 - (Alternative 2)
- ☐ 6 - (Alternative 3)
- ☐ 2 - (Alternative 1)
- ☒ 8 - (Alternative 4)

Question No.60

1.00

Bookmark ☐

The speed of DC shunt motor is -----.

- ☐ Inversely proportional to the supply voltage - (Alternative 3)
- ☐ inversely proportional to the back EMF - (Alternative 2)
- ☒ directly proportional to the back EMF - (Alternative 1)
- ☐ directly proportional to the field flux - (Alternative 4)

Question No.61

1.00

Bookmark ☐

Which motor is not started at no load?

- ☐ Induction motor - (Alternative 4)
- ☐ Stepper motor - (Alternative 3)
- ☒ DC series motor - (Alternative 2)
- ☐ DC shunt motor - (Alternative 1)

Question No.62

1.00

Bookmark ☐

As per the IE rules, the maximum load on the power sub-circuit should be restricted to ----.

- ☐ 1000 Watts - (Alternative 1)
- ☐ 800 Watts - (Alternative 3)
- ☒ 3000 Watts - (Alternative 4)
- ☐ 5000 Watts - (Alternative 2)

Question No.63

1.00

Bookmark ☐

Which motor is best suitable for cranes?

- ☐ Stepper motor - (Alternative 3)
- ☒ DC series motor - (Alternative 2)
- ☐ Induction motor - (Alternative 4)
- ☐ DC shunt motor - (Alternative 1)

Question No.64

1.00

Bookmark ☐

The armature current of 500 V DC shunt motor is 20 Amps and the armature resistance is 0.5 ohms. What will be the back EMF?

- ☒ 490 V - (Alternative 2)
- ☐ 25 V - (Alternative 4)
- ☐ 500 V - (Alternative 1)
- ☐ 510 V - (Alternative 3)

Question No.65

1.00

27/11/2018

View Question Paper

Bookmark ☐

Which one of the following fires is classified as Class 'A' fire?

- ☐ Fire on the electrical equipment - (Alternative 1)
- ☒ **Fire on the wooden Structure - (Alternative 3)**
- ☐ Fire on the LPG cylinder - (Alternative 2)
- ☐ Fire on the flammable liquids - (Alternative 4)

Question No.66

1.00

Bookmark ☐

What is the metric unit of illuminance?

- ☐ Candela - (Alternative 3)
- ☐ Lumen / Metre - (Alternative 4)
- ☒ **Lux - (Alternative 2)**
- ☐ Lumen - (Alternative 1)

Question No.67

1.00

Bookmark ☐

The value of the resistance of an Aluminium conductor is -----.

- ☒ **Inversely proportional to its diameter - (Alternative 1)**
- ☐ Directly proportional to its area of cross section - (Alternative 2)
- ☐ Inversely proportional to its length - (Alternative 4)
- ☐ Directly proportional to its radius - (Alternative 3)

Question No.68

1.00

Bookmark ☐

When the 3 phase power is measured by two wattmeter method, at what power factor, the readings of both wattmeter will be positive but not equal?

- ☒ **Between unity to 0.5 lag - (Alternative 1)**
- ☐ At 0.5 Lag - (Alternative 2)
- ☐ Between 0.5 lag to zero - (Alternative 4)
- ☐ At Unity - (Alternative 3)

Question No.69

1.00

Bookmark ☐

What is the colour of positive plates of lead acid battery under fully discharged condition?

- ☒ **Dark chocolate brown - (Alternative 2)**
- ☐ **Pure white - (Alternative 4)**
- ☐ Slate grey - (Alternative 1)
- ☐ Goldish brown - (Alternative 3)

Question No.70

1.00

Bookmark ☐

What is the capacity of a battery which can deliver a current of 20 Amps continuously for 2 hours and 30 minutes?

- ☒ **50 AH - (Alternative 1)**
- ☐ 46 AH - (Alternative 4)
- ☐ 40 AH - (Alternative 3)
- ☐ 60 AH - (Alternative 2)

27/11/2018

View Question Paper

Question No.71

1.00

Bookmark ☐

What will be the secondary voltage of a single phase transformer, if the primary voltage is 500 V and the transformation ratio is 20?

- ☒ **10000 V - (Alternative 3)**
- ☐ 1000 V - (Alternative 2)
- ☐ 400 V - (Alternative 1)
- ☐ 250 V - (Alternative 4)

Question No.72

1.00

Bookmark ☐

Name of the saw used for internal cutting of wood is ----.

- ☐ Coping saw - (Alternative 4)
- ☐ Compass saw - (Alternative 1)
- ☒ **Fret saw - (Alternative 3)**
- ☐ Tenon saw - (Alternative 2)

Question No.73

1.00

Bookmark ☐

The handle of the star screw driver tester is made of -----

- ☐ PVC - (Alternative 3)
- ☒ Toughen glass - (Alternative 4)
- ☐ Nylon - (Alternative 2)
- ☐ **Plastic - (Alternative 1)**

Question No.74

1.00

Bookmark ☐

The series field of a compound generator is wound with -----.

- ☒ **few turns in thick wire - (Alternative 2)**
- ☐ few turns in thin wire - (Alternative 3)
- ☐ more turns in thick wire - (Alternative 1)
- ☐ more turns in thin wire - (Alternative 4)

Question No.75

1.00

Bookmark ☐

The name of the terminals of a SCR are -----.

- ☐ Emitter, base and cathode - (Alternative 4)
- ☐ Emitter, gate and collector - (Alternative 1)
- ☐ Anode, cathode and base - (Alternative 3)
- ☒ **Anode, cathode and gate - (Alternative 2)**